

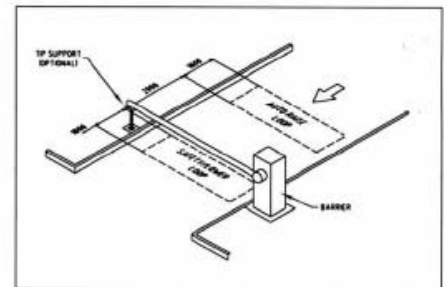
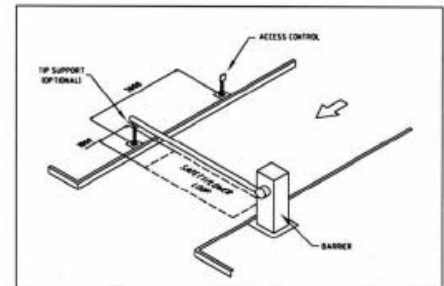
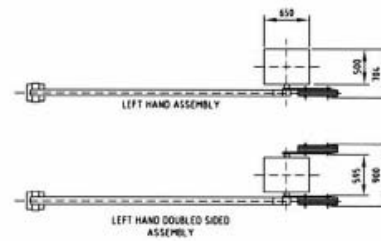
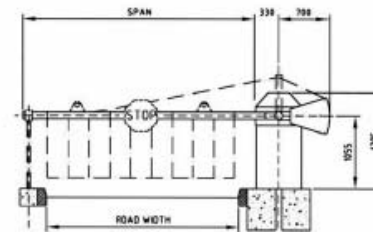


## Heavy Duty Rising Arm Barrier

“ A barrier that will withstand the extremes of traffic flow, site and weather conditions ”

Capable of spanning openings of up to 9 meters, the tough and durable unit is operated by a powerful motor and gearbox drive unit, which is inverter driven and housed in a steel/fibreglass enclosure. Operation is provided by a single-phase power supply. The sturdy aluminium barrier arm can be fitted with a long lasting and lightweight PVC half or full height curtain.

The Heavy Duty barrier can be controlled from a manned security point or automatically by the vehicle occupant, using a wide range of access control systems. Proximity card, radio, token, keypad and intercom combined with induction loop or photocell safety and close facilities, ensure the barrier arm will open smoothly and efficiently upon activation.



Construction	Frame - Steel Top Cover - Fibreglass Arm - Aluminium	Standard Opening	90 Degrees
Span(s)	Up to 9000mm (without curtain) Up to 8000mm (with half curtain) Up to 6500mm (with full curtain)	Manual Operation	Included as Standard
Dimensions	See above details	Finish	Cabinet - Red (corporate colours available on request) Top Cover - White Arm - Red
Drive Unit	Motor and Gearbox	Control Options	Card, Radio, Token, Keypad, Intercom, Push Button, Vehicle Transponder, Induction Loop and Photocell
Operating Supply	230v 1Ph 50Hz - 6 amps	Safety Features	Induction Loop or Photocell safety available on request
Operating Speed	7.0 seconds	Accessories	Corporate Colours, Stop Signs, Boom Lights, PVC Half/Full Curtains, Tip Support Post, Access Reader Posts
Power	0.37 Kw	Approved Standards	C.E. BS5071 PT4

# SAE SYSTEMS

