



“Tough, reliable and un-compromising”

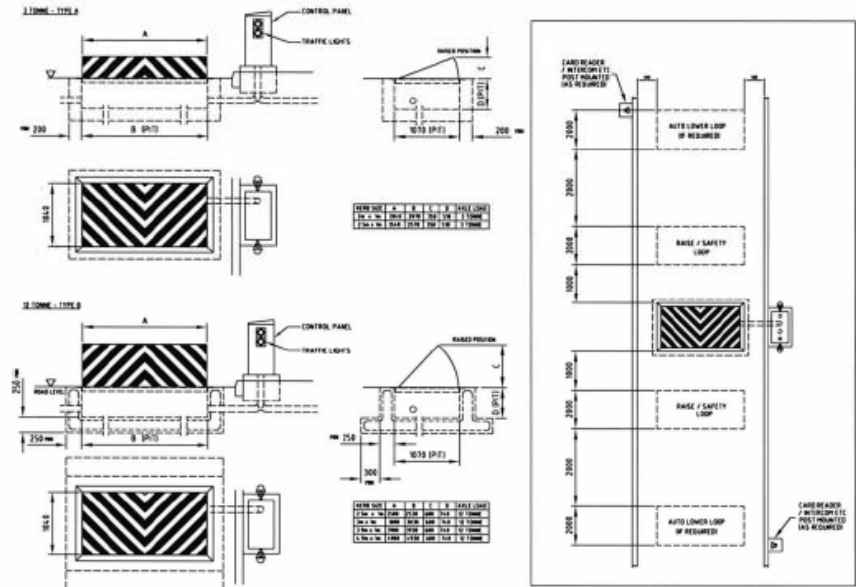
## Electric Rising Kerb Barriers



Available in two types and six sizes, the Rising Kerb is designed to withstanding axle weights of 3 tonnes (type A - 2 metres and 2.5 metres) and 12 tonnes (type B - 2.5 metres, 3 metres, 3.9 metres and 4.9 metres).

Manufactured from a welded rectangular hollow section frame and durbar top plate, the Rising Kerb features a hydraulic power pack to raise and lower the unit smoothly. A state of the art programmable logic controller co-ordinates the hydraulics, access control and traffic light signaling system. During power failure an emergency lowering facility is fitted as standard.

A variety of access control options are available including, proximity card, radio, token, keypad and intercom. These combined with induction loop or photocell safety and close facilities, ensure the rising kerb open and close smoothly on each activation.



Construction	Frame - Steel, Rectangular hollow section Top Plate - Durbar	Standard Opening	Type A - 350mm Lift Type B - 600mm Lift
Span(s)	See above details	Manual Operation	Emergency Lower Included as Standard
Dimensions	See above details	Finish	Galvanised + Paint (yellow/black)
Drive Unit	Hydraulic Power Pack	Control Options	Card, Radio, Token, Keypad, Intercom, Push Button, Vehicle Transponder, Induction Loop and Photocell
Operating Supply	400v 3Ph + neutral + earth 50 Hz - 10 amps 230v 1Ph 50Hz - 16 amps	Safety Features	Induction Loop and Photocell - Both available on request
Operating Speed	Type A - 3.0 seconds Type B - 6.0 seconds	Accessories	Two(2) Pairs - Red / Green Traffic Lights included as Standard
Power	Type A - 1.5Kw Type B - 1.5Kw	Approved Standards	C.E. BS6071 Pt4

# SAE SYSTEMS