

SAE SYSTEMS

XMAIL1 – PORTABLE MAIL & OBJECT X-RAY INSPECTION SYSTEM



Applications

XMAIL1 is used for the X-Ray inspection of mail, baggage, office equipment, etc to detect explosives, weapons or electronic bugs. Due to its solid construction and safety features XMAIL1 is safe to operate in any office environment or security checkpoint.

X-Ray generator

A microfocus X-Ray tube allows very thin objects such as wires and detonation devices to be detected. The XMAIL1 specially designed X-Ray generator contributes to its overall small dimension. An adjustable voltage allows the inspection of objects of various thickness and density. The dual energy option enables differentiation between organic and inorganic objects.

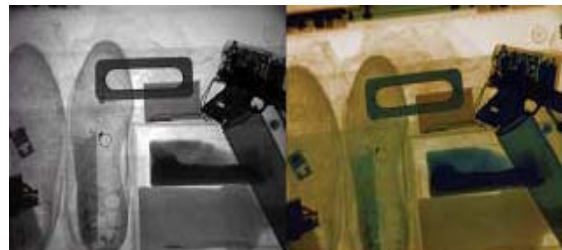
Processing unit

XMAIL1 features a versatile image processing unit capable of saving up to 30,000 images accompanied by voice and text comments.

Design

The XMAIL1 is designed as a compact and robust portable X-Ray inspection system ideal for use in airports, railway stations, mail rooms or virtually any office or industrial environment. It has small overall dimensions, modern design and is supplied with a mobile base that enables it to be moved around by one person.

All basic operation functions of XMAIL1 are carried out via a remote control unit. A high contrast, high resolution display shows images with unparalleled accuracy. The chamber for X-raying objects is supplied with an adjustable tray. By precisely positioning an object, using the movable tray, high resolution magnifications up to 12 times can be achieved (only with a microfocus X-ray unit).



B/W and Dual energy images

General specifications

Max. object size (W x H x L) 440 x 520 x 550 mm

Max. object weight 30 kg

Penetration Fe/Al equivalent 16/70 mm

Wire detection/with 8x geometric magnification (only for microfocus X-ray unit) 0,08/0,02 mm

Through-put up to 120 images per hour

Radiation leakage less than 1,0 μ Sv/h

X-Ray Generator

X-ray tube voltage settings for microfocus X-ray units 30-100/45-120 kV

Tube current (typical) for microfocus X-ray units 0,1/0,5 mA

Operating temperature (Relative humidity) +5°C to +40°C (80% at 25°C)

Power 110/220 V

Power consumption 180 W

Dimensions (W x H) 610 x 1380 mm

Weight 275 kg